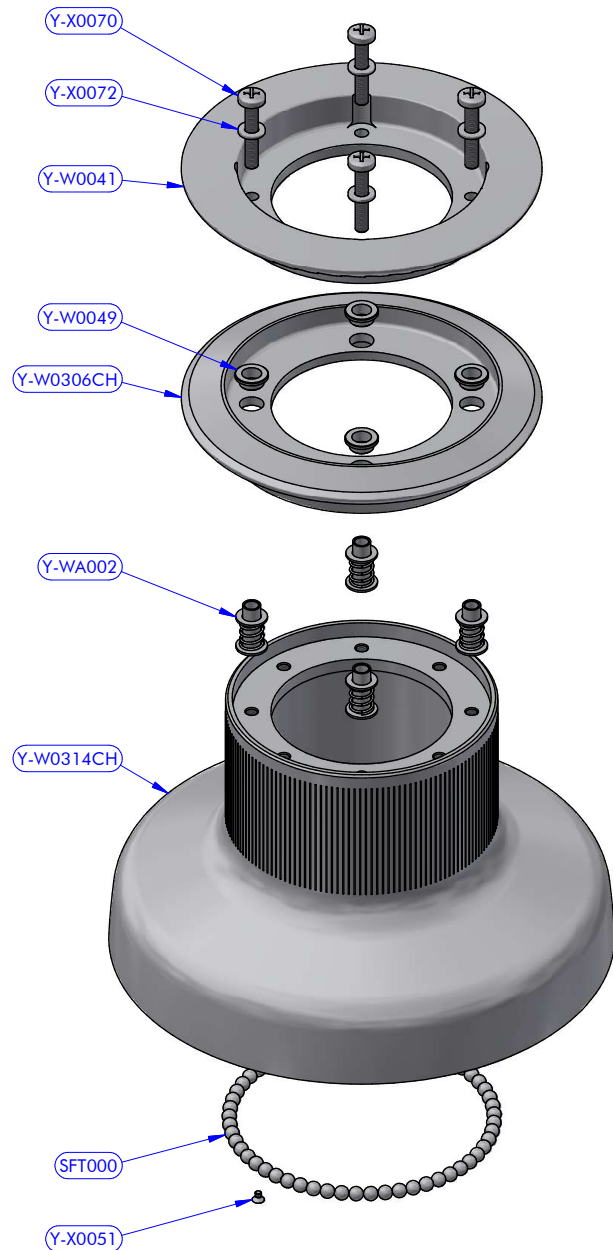
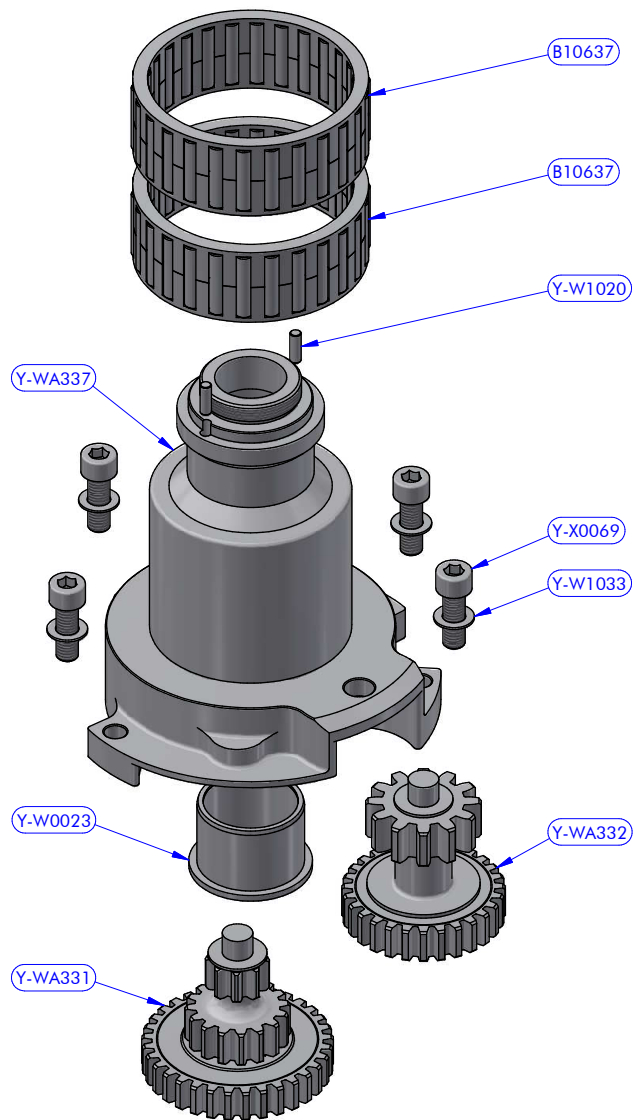


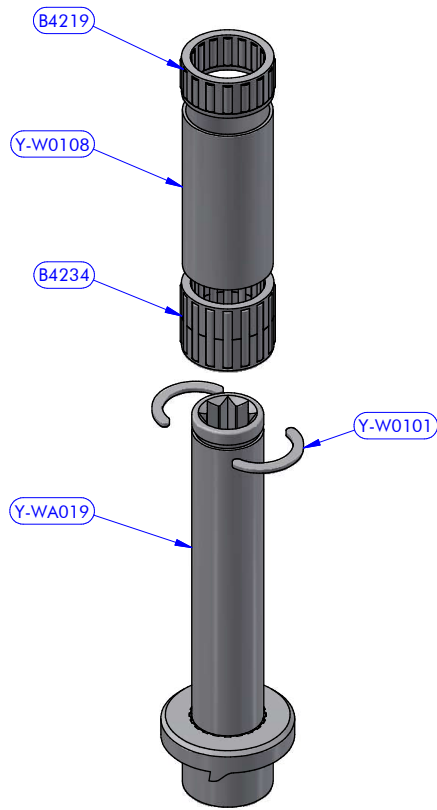
PART LIST			
CODE	DESCRIPTION	MATERIAL	Q.TY
Y-W0006	Upper ring washer	Plastic	1
Y-W0017	Stripper	Plastic	1
Y-W0143	ST plug	Plastic	6
Y-W0153	Shaft cap	POM-C	1
Y-W0159	Skirt	Aluminium	1
Y-W0301CH	Upper disk	Chromed brass	1
Y-W0373	Bushing	Chromed bronze	1
Y-W0382	Pin	S.Steel	2
Y-W0383	Fork stand	Aluminium	2
Y-W0479	Button	Aluminium	1
Y-W0721	Opening tool	S.Steel	1
Y-W0816	Gear "A3"	Bronze	1
Y-W1020	Cylinder pin	S.Steel	2
Y-W1328	Upper cap	S.Steel	1
Y-W1356CH	Self-tailing arm	Chromed brass	1
Y-WA004	3 speed button kit	Various	1
Y-WA324	Drum	Various	1
Y-WA333	Main shaft assy	Various	1
Y-WA335	Main shaft assy	Various	1
Y-WA339	3 speed fork lever kit	Various	1
Y-WA340	Base + Gears assy	Various	1
Y-X0057	Screw	S.Steel	1
Y-X0064	Screw	S.Steel	2



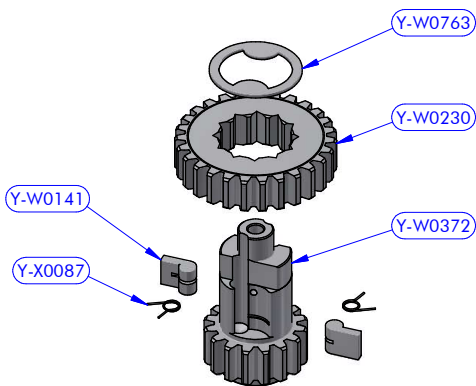
Y-WA324 - PART LIST			
CODE	DESCRIPTION	MATERIAL	Q.TY
SFT000	Torlon ball	Torlon	57
Y-W0041	ST central disk	Aluminium	1
Y-W0049	ST disk bush	Plastic	4
Y-W0306CH	ST lower disk	Chromed brass	1
Y-W0314CH	Drum	Chromed brass	1
Y-WA002	ST-spring assy	S.Steel	4
Y-X0051	Screw	S.Steel	1
Y-X0070	Screw	S.Steel	4
Y-X0072	S.Steel washer	S.Steel	4



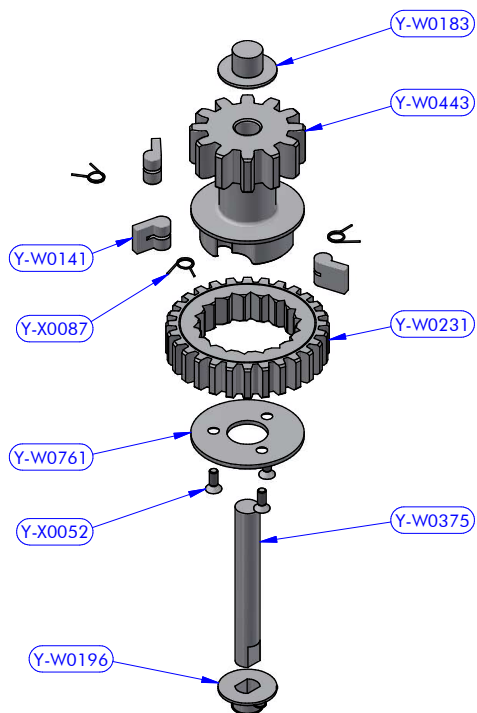
Y-WA340 - PART LIST			
CODE	DESCRIPTION	MATERIAL	Q.TY
B10637	Roller bearing	Plastic / S.Steel	2
Y-W0023	Bearing track	Plastic / S.Steel	1
Y-W1020	Cylinder pin	S.Steel	2
Y-W1033	S.Steel washer	S.Steel	4
Y-WA331	Axis "D" kit	Various	1
Y-WA332	Gears kit	Various	1
Y-WA337	Base + Stem	Various	1
Y-X0069	Screw	S.Steel	4



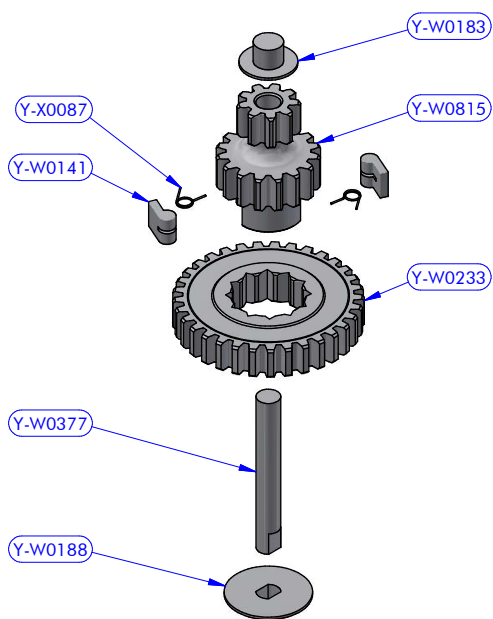
Y-WA333 - PART LIST			
CODE	DESCRIPTION	MATERIAL	Q.TY
B4219	Roller bearing	Plastic / S.Steel	1
B4234	Roller bearing	Plastic / S.Steel	1
Y-W0101	Half-ring	Brass	2
Y-W0108	Pipe spacer	Plastic	1
Y-WA019	Main shaft + Tow	S.Steel / Bronze	1



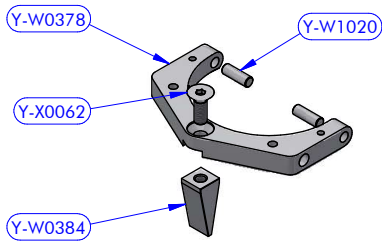
Y-WA335 - PART LIST			
CODE	DESCRIPTION	MATERIAL	Q.TY
Y-W0141	Pawl	S.Steel	2
Y-W0230	Gear "A2"	Bronze	1
Y-W0372	Lower shaft	S.Steel	1
Y-W0763	Special washer	S.Steel	1
Y-X0087	Torsion spring	S.Steel	2



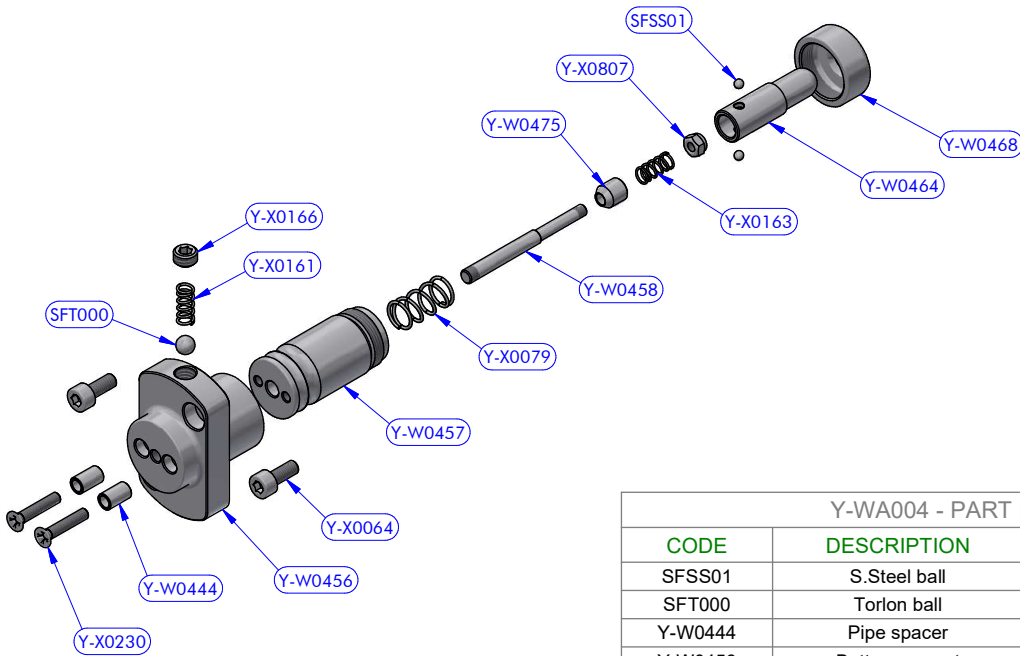
Y-WA332 - PART LIST			
CODE	DESCRIPTION	MATERIAL	Q.TY
Y-W0141	Pawl	S.Steel	3
Y-W0183	Gear upper washer	Plastic	1
Y-W0196	Gear lower washer	Plastic	1
Y-W0231	Gear "B1"	Bronze	1
Y-W0375	Gear axis	S.Steel	1
Y-W0443	Gear "B2"	Bronze	1
Y-W0761	Gear ring	S.Steel	1
Y-X0052	Screw	S.Steel	3
Y-X0087	Torsion spring	S.Steel	3



Y-WA331 - PART LIST			
CODE	DESCRIPTION	MATERIAL	Q.TY
Y-W0141	Pawl	S.Steel	2
Y-W0183	Gear upper washer	Plastic	1
Y-W0188	Gear lower washer	Plastic	1
Y-W0233	Gear "D1"	Bronze	1
Y-W0377	Gear axis	S.Steel	1
Y-W0815	Dual gear "D2 / D3"	Bronze	1
Y-X0087	Torsion spring	S.Steel	2



Y-WA339 - PART LIST			
CODE	DESCRIPTION	MATERIAL	Q.TY
Y-W0378	Fork	Aluminium	1
Y-W0384	Fork lever	Aluminium	1
Y-W1020	Cylinder pin	S.Steel	2
Y-X0062	Screw	S.Steel	1



Y-WA004 - PART LIST			
CODE	DESCRIPTION	MATERIAL	Q.TY
SFSS01	S.Steel ball	S.Steel	2
SFT000	Torlon ball	Torlon	1
Y-W0444	Pipe spacer	S.Steel	2
Y-W0456	Button support	Aluminium	1
Y-W0457	Sliding cylinder	S.Steel	1
Y-W0458	3-Speed Push-button Rod	S.Steel	1
Y-W0464	Button tip	S.Steel	1
Y-W0468	Sliding cylinder cap	S.Steel	1
Y-W0475	Button slider	S.Steel	1
Y-X0064	Screw	S.Steel	2
Y-X0079	Compression spring	S.Steel	1
Y-X0161	Compression spring	S.Steel	1
Y-X0163	Compression spring	S.Steel	1
Y-X0166	Flat point set screw	S.Steel	1
Y-X0230	Screw	S.Steel	2
Y-X0807	Self-Locking nut	S.Steel	1